



Valuing People Now Commissioning for Healthy Lives

Sue Carmichael, lead for
health and people with
complex needs,
Department of Health

Valuing People Now



“Effective Partnership Boards are central to the strategic planning, commissioning, delivery and performance management of services for people with Learning Disabilities and their families. Based on strong commitment and with senior membership from Local Authorities and Primary Care Trusts, they have sufficient information and authority to oversee and monitor the delivery of *Valuing People Now* locally.”

Valuing People Now –
The Delivery Plan 2009

The Key Priorities



- To make sure everyone who works with people with learning disabilities (and everyone else) knows about Valuing People Now.
- To make sure every Partnership Board makes a difference
- To make sure people with learning disabilities get the healthcare they need.

The Key Priorities



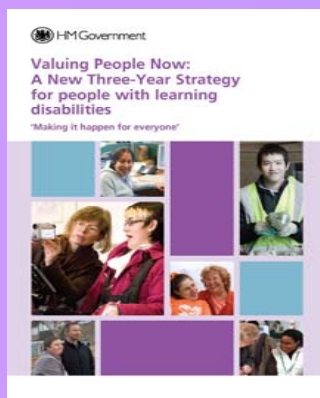
- To give people more choice about where they live and to close all the NHS campuses.
- To make sure people with learning disabilities get person centre plans and are in control of their lives. This is called Personalisation.
- To make sure more people with a learning disabilities get a paid job.

Partnership Boards

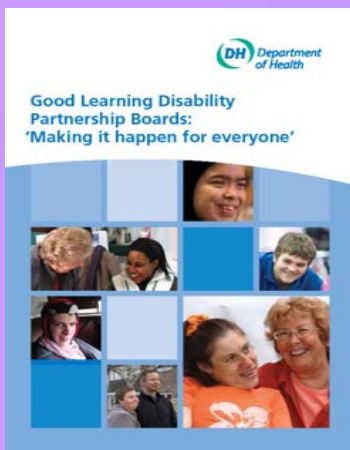


People told us they wanted stronger Partnership Boards during the consultation for Valuing People Now

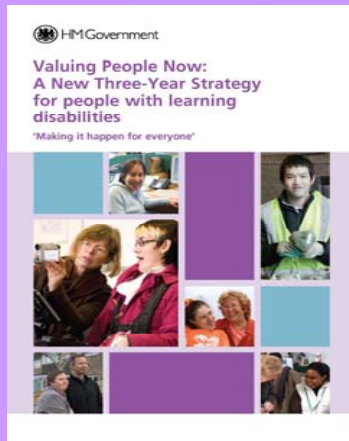
Partnership Boards



- Valuing People Now gives new responsibilities to Partnership Boards
- Best practice guidance published in October 2009
- Full pack launched yesterday



What does the Board need to really work?



- Everyone understands the Board is to make Valuing People Now happen for all people with Learning Disabilities
- Good People who make things happen
- Ways of working that involve all members
- Good information about people's needs, services and money
- Work Programmes

What does the Board need to really work?



- Plans to make services better
- Checks to see if things are happening
- Ways of telling other people about the work of the Board
- Links to other programmes like Carers, Older People

How will we know if Boards are getting better?



- Partnership Boards are asked to do a report of their work each year.
- We suggest this year it includes the Ombudsmen's recommendations.
- Regional Boards will look at reports and give advice and support.

Also Launched at Learning Disability Today



- **World Class Commissioning** – Improving the health and well being of people with learning disabilities



- **Equal Access?** – A practical guide for the NHS. Creating a single equity scheme that includes improving access for people with learning disabilities.

What they do-



These will:

- Tell commissioners how to plan and provide services that really meet the needs of people with learning disabilities
- Give practical advice about including people with learning disabilities in NHS equality schemes.



Drivers for change-



- Health Inequalities
- Service failings
- Demographic changes
- Legal requirements
- Higher quality of care for all



In addition-

- Distinctive features of commissioning-
- Partnership Board
- Legal requirements-reasonable adjustments
- Person centred
- Information sharing
- Promoting access
- Effective communication
- Diagnostic overshadowing
- Consent and capacity
- Knowledge and skills
- Lead commissioning
- Campus closure



In addition-

- The commissioning cycle
- Developing capacity and skills
- Practice examples
- Setting specific support
- Regional self assessment
- Much more
- Happy to receive comments and views
- Equal Access? A specific and complementary aid to support NHS organisations with their equality duty.



So finally-

- What are you doing?
- What are you not doing?
- So what is the plan?
- Do all your partners agree?
- Tell us what you have done through the Partnership Board year end report and regional self assessment
- Tell us what we need to do.

